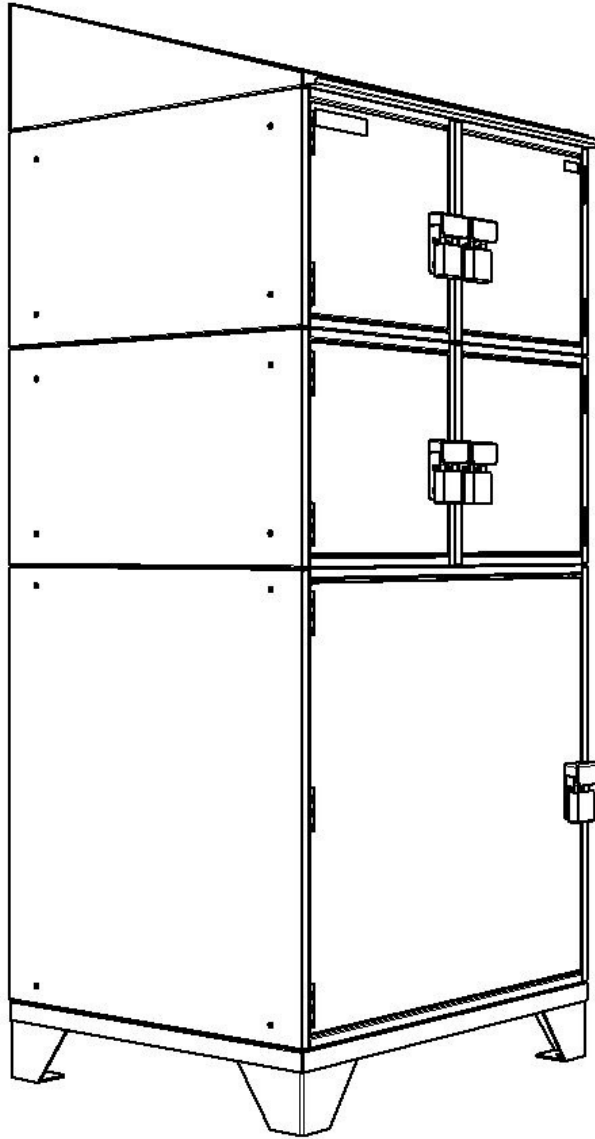


PROPER USE AND INSTALLATION FOR CHAMPION SVPRO SERIES

The following instructions will provide you with a guide for installation and usage for the SVPRO Series cabinets. If at any time you need guidance or help, please do not hesitate to call us. Thanks again for choosing Champion Tool Storage.



QUESTIONS

Champion Tool Storage

3070 Lower Mill Dr.

Hood River Oregon 97031

W: www.championbuilt.com

E-mail: info@championbuilt.com

Phone: 866-391-4200

8 AM - 5PM, PST, Monday-Friday

Table Of Contants

| | |
|------------------------|----|
| Before You Begin | 3 |
| Installation Site Prep | 4 |
| Installation | 7 |
| Proper Use | 11 |
| Lock Use | 12 |
| Proper Care / Safety | 12 |
| Warranty | 12 |

Before You Begin

1. Check your inventory to be sure you received your entire order. If there are any missing or damaged parts, contact Champion Customer Service at 541-386-7700
2. Only use the provided hardware during assembly.
3. Read and understand the entire installation instructions prior to beginning the install.

Tools Required



Hammer



Socket Wrench



9/16 Deep Socket



7/16 Deep Socket



6" Extension



Box Wrench 7/16



Punch Tool

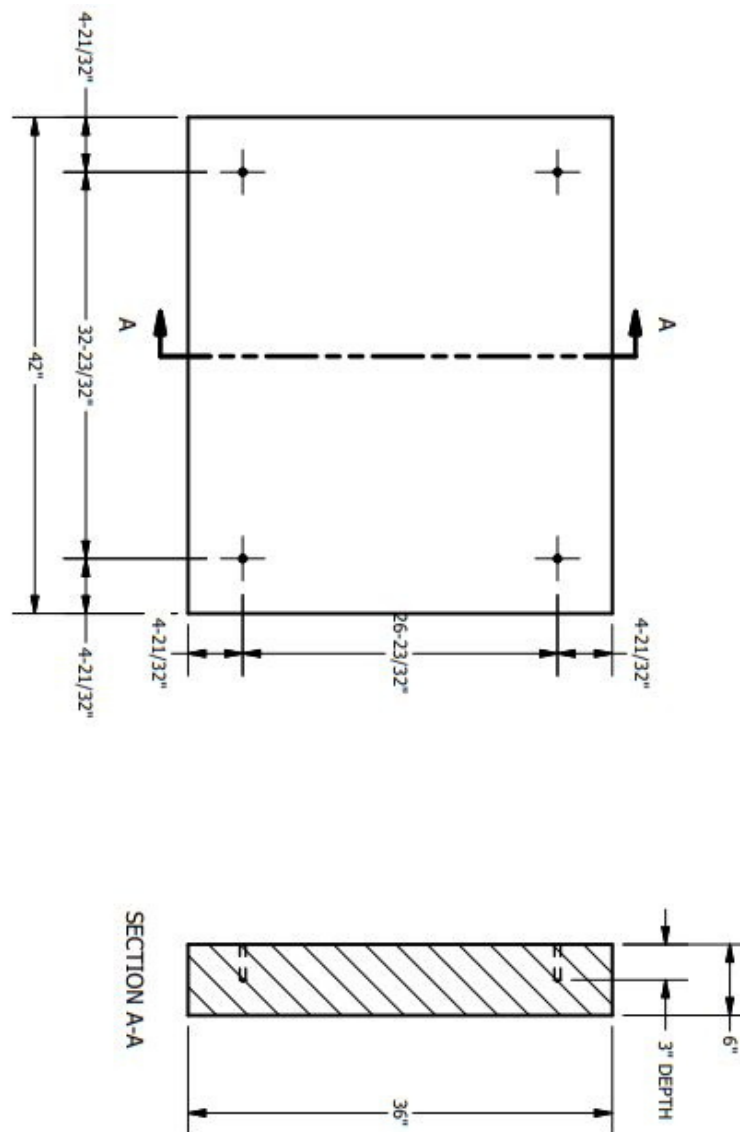


Wirecutters

Site Prep

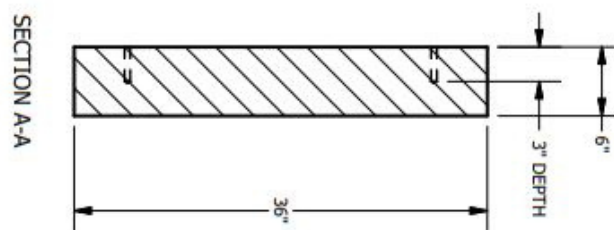
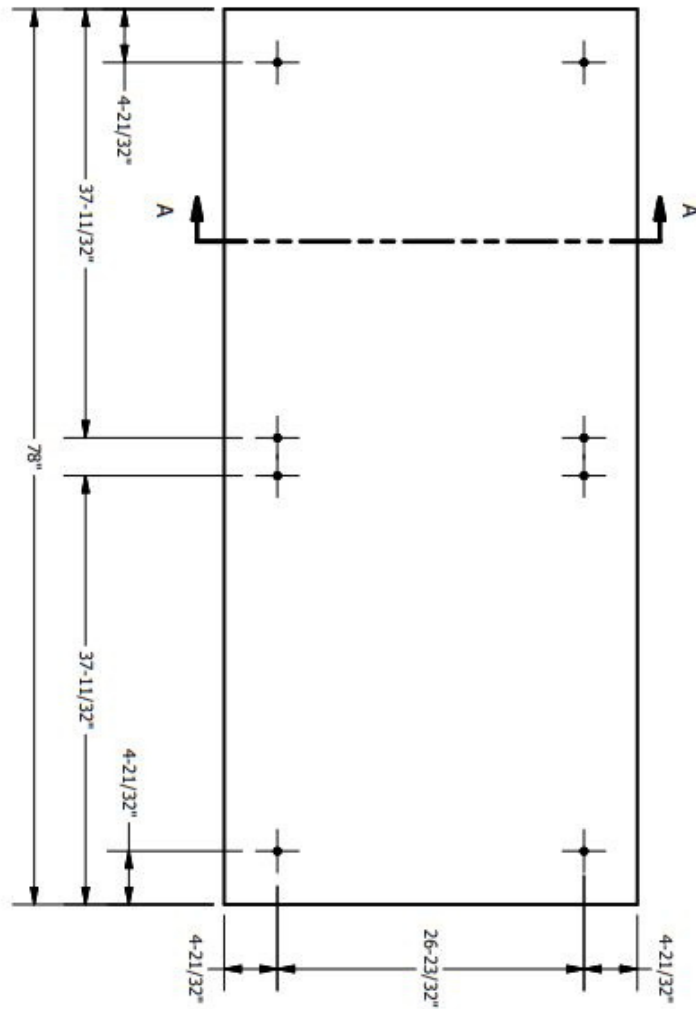
1. Before installing the units, make sure your site is ready.
 - A level concrete pad is recommended that is 6" larger in width and 6" larger in depth of the total number of cabinets being installed. See below for recommended pad size for one, two, and three units. A single unit template is available for purchase if needed, part #4003551 Locker Base Drill Template.
 - Install (4) 3/8" X 3-3/4" Concrete Wedge Anchors(not included) per unit into the drilled holes on the concrete pad.
 - Remove the nut and washers on the Concrete Wedge Anchors before installing the SVPRO units.

Single Locker Pad



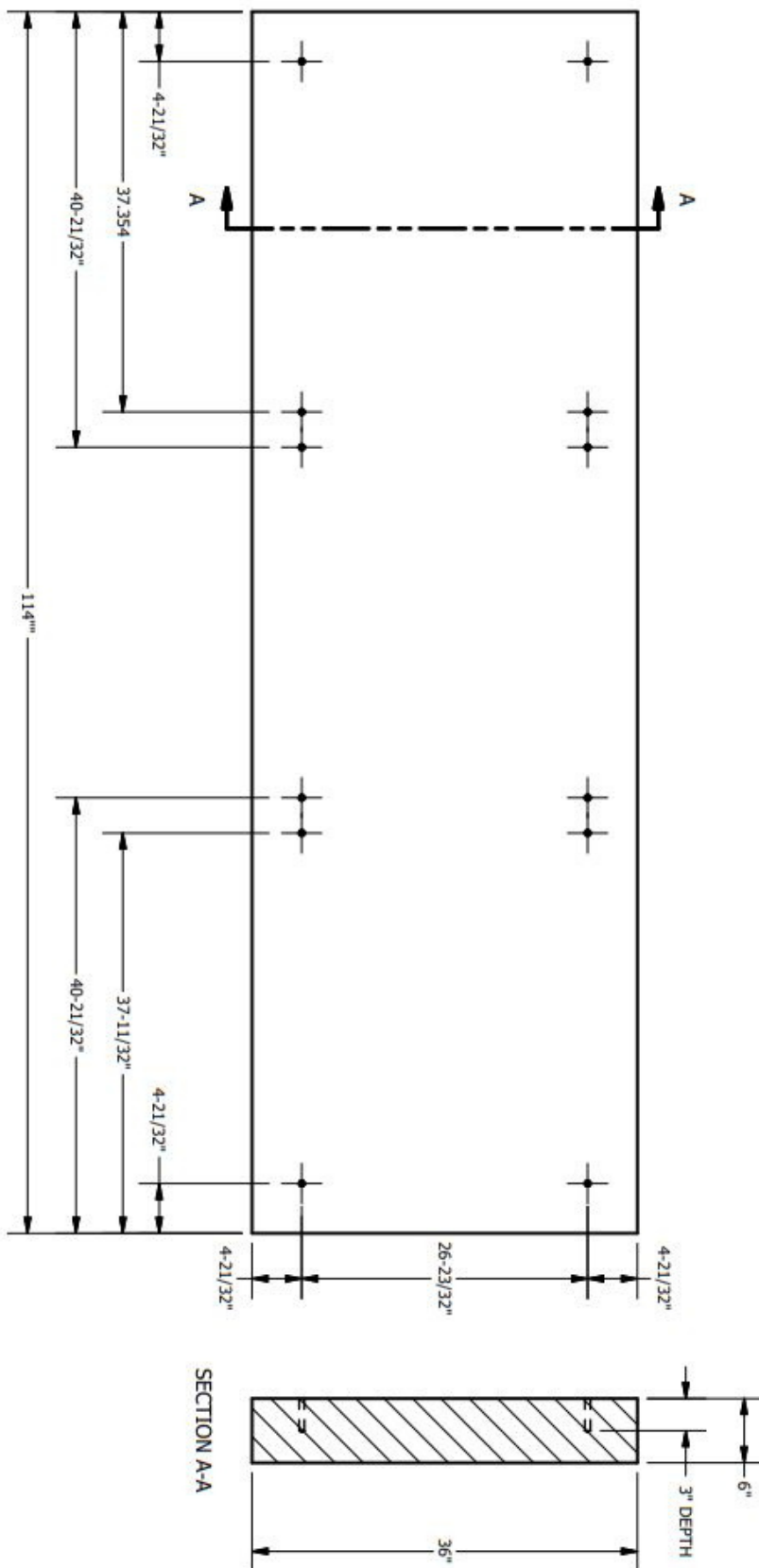
Site Prep

Double Locker Pad



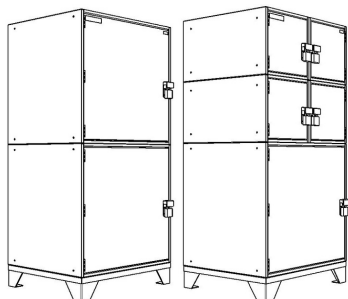
Site Prep

Triple Locker Pad

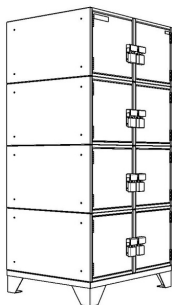


Installation

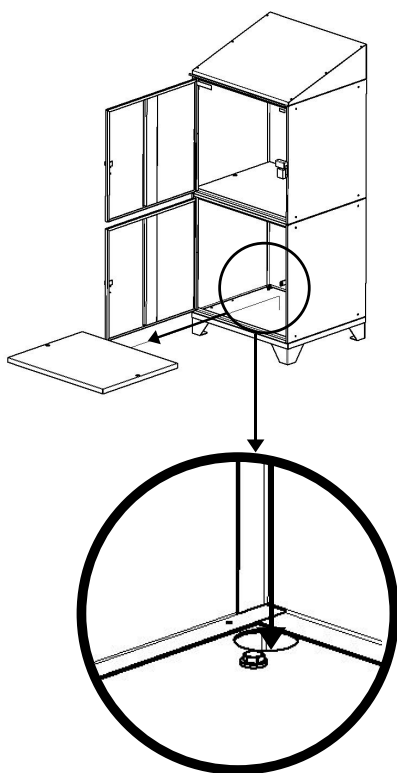
1.



- Use a forklift or pallet jack to move the following Models into place, SVP2, SVP5, and SVP8.
- Remove all packaging.
- Set the unit on the pad and align the holes over the studs in the Concrete Pad.
- See Step 5 for installation instructions for the SVP3. *Note, All locker doors must be locked while moving.* If your locks are not installed before setting the unit in place, make sure the zip ties are in place to prevent the door from opening while moving.



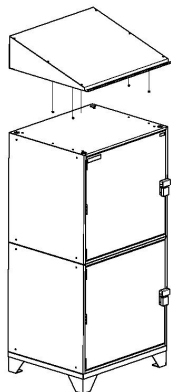
2.



- Open the lower locker doors by cutting the temporary zip tie in the lock hasp hole.
- Remove the false floor from the locker.
- Using a socket wrench, 6" extension, and deep well 9/16" socket, install the anchor washer and nut.
- Install the false floor.

Installation

3.

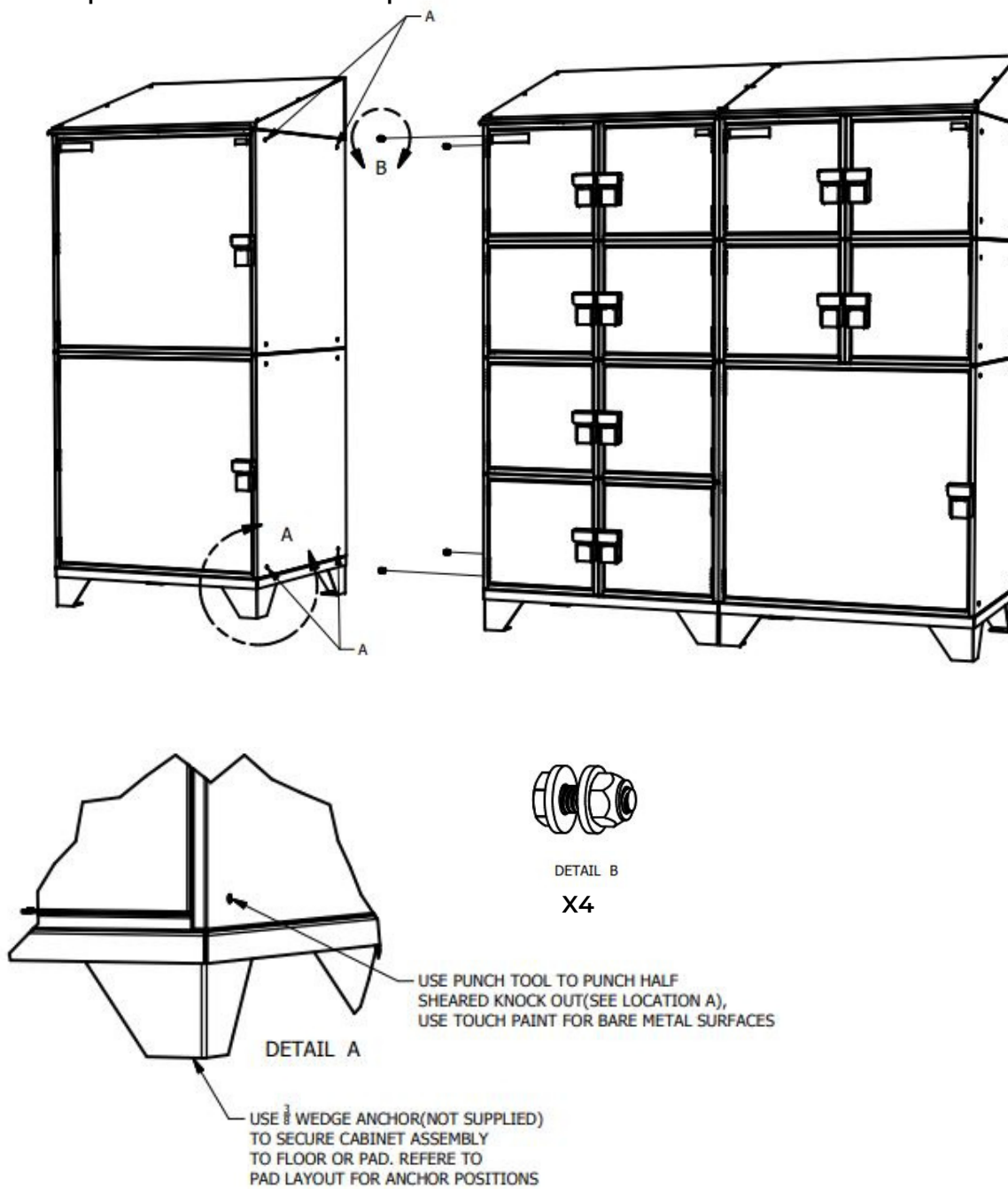


- Remove nuts from the (4) studs.
- Install the Slope Top.
- Open Door or Doors on top units and place slope top on the aligning holes.
- Install locking nuts and secure to cabinet.

Installation

4 Ganging multiple units.

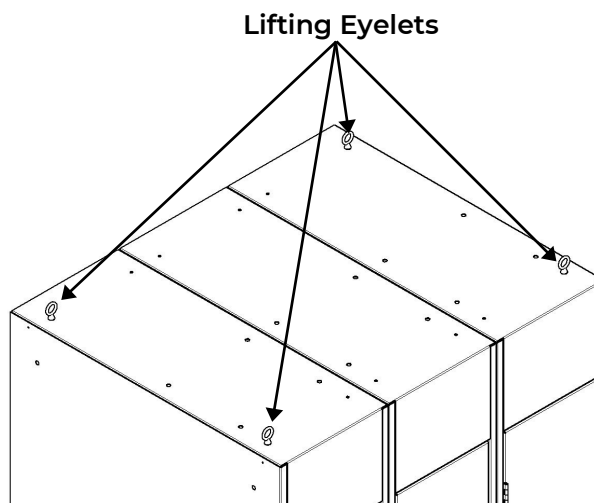
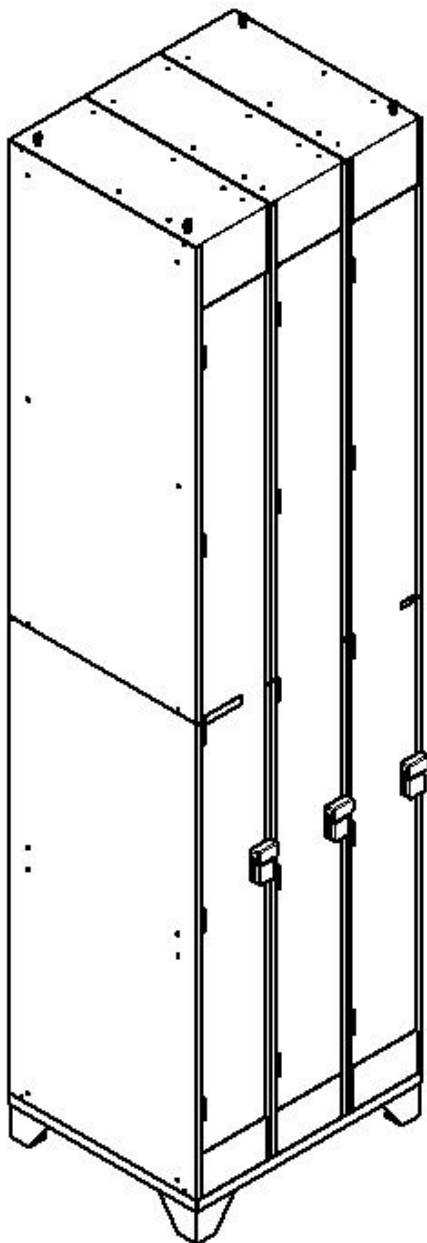
- Punch knock outs as shown in Detail A.
- Use touch up paint to cover bare metal after knock outs are removed.
- Position the cabinets in place with the doors in the open position.
- Ganging Hardware Kit required, 1 per pair of units ganged. Part #7001228
- Repeat as needed for multiple units.



Installation

5 Installation of the SVP3

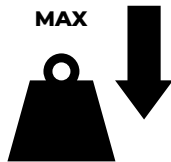
- Tilt the unit to the upright position using the 4 eyelets at the top of the unit with a forklift and sling/chain. The operator should be a certified forlift operator.
- Lift the unit from the shipping pallet and position on the pad.
- Secure the unit to the pad, see Step 2.
- Gang the unit the the adjoining cabinets, see step 4.
- Install the Slope Top, see Step 3.



6 This completes Installation.

Proper Use

750lb
MAX



750lb Max load per
locker bay.



Do not drop
items into
drawers,
damage may
occur.



Do not use shelves as a step, or seat,
injury or damage may occur.

Noke Lock Set Up and Use

- Your Noke Locks can be found in the bottom right of the locker. The package is labeled NOKE Locks.
- For use and installation, please see the Noke Quick Start Guide or contact your sales representative for guidance.

Proper Care

- Periodically clean the surfaces with a mild detergent and water.
- Auto wax preserves the storage unit's finish and protects against scratches. Apply the wax as you would on a car.

Safety Information

- Secure the product before use.
- Do not tow the product with power equipment.
- Do not alter this product in any manner. Doing so will void the warranty.
- When locking unit, make sure all doors are in the fully closed position in order for the locking system to work properly.



Do not attach or mount this product to a vehicle. This may cause personal injury or product damage. Mounting this product to a vehicle in any manner will void the warranty.



Do not stand or sit on this product. Doing so may cause personal injury..



Do not use drawers as steps or sit in drawers on this product. Doing so may cause personal injury..



This product must be on a level surface at all times. If stored or moved on an unlevel surface, personal injury or product damage may occur. If product is moved, lock all drawer before moving.

Warranty

Champion Tool Storage warrants only to the original purchaser that our Tool Storage products are free from defects in materials and workmanship for so long as the original purchaser retains ownership, possession and control of the product. Our Warranty only applies to Champion Tool Storage manufactured Professional Series, Modular Series, Flight line Series, and Military. Our warranty excludes damage caused by misuse, abuse, modifications to the unit, or the user not conforming to the recommended capacities as stated on our website or catalog. All hardware including drawer slides, hinges, and locks are warranted for one year from delivery date of the original invoice. If buyer claims that a product violates such warranty, Champion, upon notice promptly given, will either issue an RMA and shipping instructions for return to Champion at buyer's expense or provide transportation charges prepaid. Champion's sole obligation under its warranty shall be, at its option, to repair, replace or refund the price of any product thereof which is proved to violate such warranty. In no event shall Champion be liable to the buyer for special, indirect, incidental or consequential damages whatsoever including, without limitation, loss of profit or revenue. Title and risk of loss have passed to the original purchaser upon delivery to a common carrier. If any product is damaged in transit, the original purchaser must file a claim with the carrier, which claim is not a warranty claim. If you have any questions regarding your warranty please contact our sales department at 1-866-391-4200.